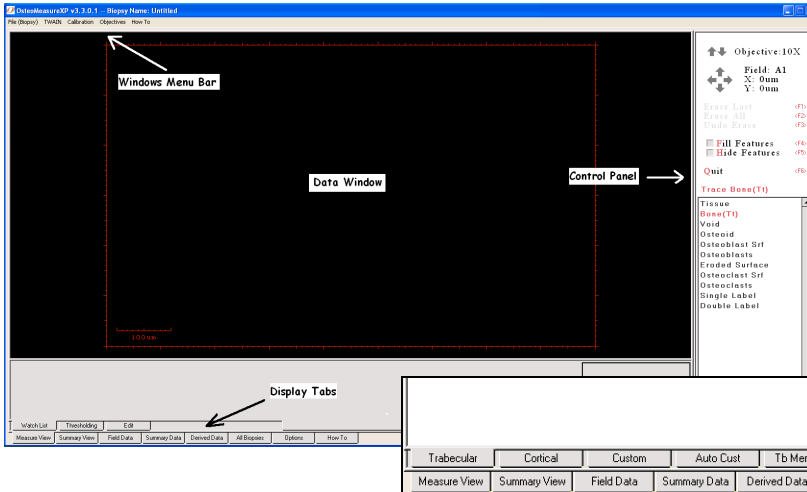
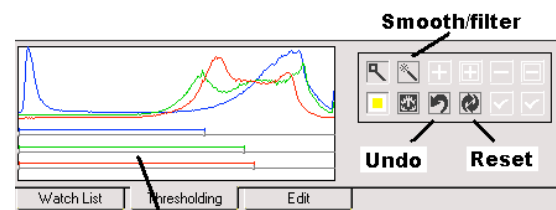
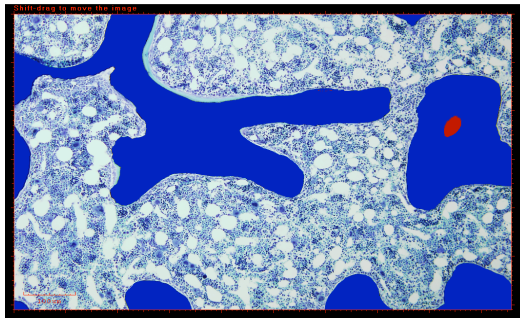


# OsteoMeasure

Bone Histomorphometry  
Continuously Updated  
Effective & Efficient  
Advanced & Simple



**Straightforward  
User Interface with  
well-organized  
Measurements and  
Options designed for  
JBMR compliance**



**Clickable bars  
Effective Thresholding Tools**

	T.Ar	B.Ar	O.Ar	B.Pm	O.Pm	BV/TV	OV/BV	BS/BV
Untitled	0.0000000	0.0000000	0.0000000	0.0000	0.0000	*	*	*
Untitled02	0.5400000	0.1411399	0.0030752	8.7462	0.3289	26.1370	2.1789	61.9684
Untitled03	0.5400000	0.2572999	0.0000000	7.3062	-0.0000	47.6481	0.0000	28.3958
Untitled04	0.5400000	0.1689431	0.0000000	12.3482	-0.0000	31.2858	0.0000	73.0910
Untitled05	0.5400000	0.1813559	0.0000000	6.6534	-0.0000	33.5844	0.0000	36.6871
Untitled06	0.5400000	0.3580201	0.0018396	13.5639	0.2186	66.3000	0.5138	37.8858
Untitled07	0.5845988	0.3326913	0.0000000	11.7222	0.0000	56.9093	0.0000	35.2345

Settings:  
 2D-3D Correction Factor - 1.000  
 Label Surface Calculation - L.Pm = dL.Pm+sL.Pm/2  
 Interlabel Time - 10 days  
 Kinetic Unit - BFR/BV,TV (%/d)  
 Bone Measurement Mode - Total Bone (including osteoid)  
 Aj.AR Mode - Always as calculated  
 MAR Mode - MAR = missing  
 Measured Ct Bone Area - Includes Both marrow Voids and Osteonal Voids  
 Merge Option - Merge Off

**All your data in one click....**

## Effective and Efficient Measuring Tools

- Graphical overlays on live digital imaging for fast and efficient semi-automatic measurement
- Publication quality images at all magnifications with 20 Mpixel digital camera
- Ergonomic QHD Pen Touch Monitor for fast, efficient manual tracing
- Support for measurement of TIFF, BigTIFF images
- Support for scanned image datasets



1244 Clairmont Road, #100  
Decatur, GA 30030, USA  
+1(404)876-6558  
charles.bleau@scimeasure.com

# OsteoMeasure

Bone Histomorphometry  
Continuously Updated  
Effective & Efficient  
Advanced & Simple

## NEW 64-Bit High Resolution Digital Color Video System

- ASBMR Standard Nomenclature
- Menu driven and very user-friendly
- Calculates 341 standard bone parameters
- Trabecular and Cortical templates
- Periosteal, Endocortical and Osteonal
- Intelligent Open measurements
- Automated area measurement by thresholding
- Collates all data in a project folder into a single view
- Copy and Paste project data into spreadsheets directly
- GLP validation package available
- Download updates on demand at no cost
- No hidden costs or annual fees

## Performance-matched Digital Imaging Components



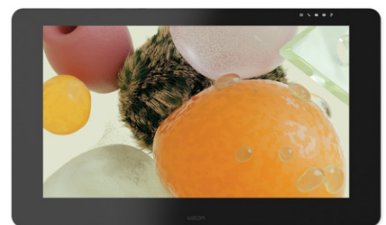
**DP-75 Digital Microscope Camera with C-mount**  
1.1" 12.37 Mpixel CMOS sensor with TEC cooler  
RGB 3-Sensor modes up to 4096 x 3000 pixels  
RGB Pixel Shift modes up to 8192 x 6000 pixels  
Super sensitivity ISO 100-3200  
Auto/SFL/Manual exposure 28 us – 120 s  
Measurement on 60 fps LIVE digital image

### Wacom CintiqPro24

4k UHD Pen Touch Display with Stand  
3840 x 2160 @ 60Hz  
Active area 20.6 x 11.6 in 522 x 294 mm

### Upgrade available to CintiqPro27

3840 x 2160 @ 50Hz/60Hz/120Hz  
Active area 23.5 x 13.2 in 596 x 335 mm



### HP Z2G9 Workstation Computer

Windows 11 Pro - Intel® Core™ i7-14700 (2.1 GHz, ~5.4 GHz w/Boost, 33 MB cache, 20 core) - 16 GB DDR5-4800 - 512 GB PCIe M.2 SSD - 1 TB 7200 RPM HDD - NVIDIA® T400 (4 GB GDDR6, 3 x Mini DP) Graphics - USB 3.1 Gen 2 Port v2 - Single C SuperSpeed USB 20 Gbps - 9.5mm DVDRW ODD – **HP Z4G5 Upgrade available**



## Installation and Training

On-site Installation and Training - 1 and 2 day options - available in the following regions:  
North America - Europe - Australia or New Zealand - China, Japan or S. Korea



1244 Clairmont Road, #100  
Decatur, GA 30030, USA  
+1(404)876-6558  
charles.bleau@scimeasure.com